

DESIGN GOALS

1. Create an iconic place for an international icon, the Gateway Arch.
2. Catalyze increased vitality in the St. Louis region.
3. Honor the character-defining elements of the historic landmark.
4. Weave connections and transitions from the City and the Arch grounds to the River.
5. Embrace the Mississippi River and the east bank in Illinois as an integral part of the National Park.
6. Reinvigorate the mission to tell the story of St. Louis as the gateway to national expansion.
7. Create attractors to promote extended visitation to the Arch, the City and the River.
8. Mitigate the impact of transportation systems.
9. Develop a sustainable future.
10. Enhance the visitor experience and create a working and accessible environment.

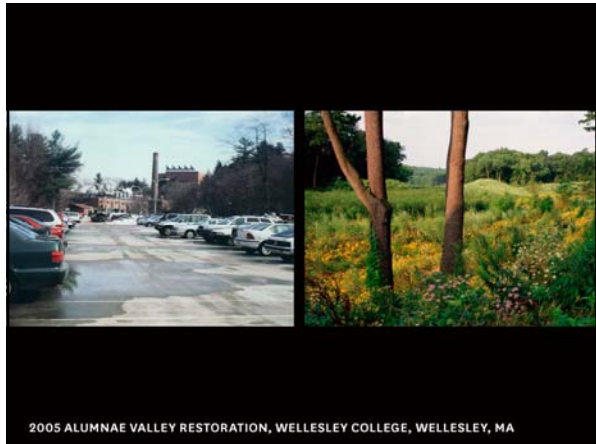
FRAMING A MODERN MASTERPIECE
THE CITY-THE ARCH-THE RIVER | 2015

3

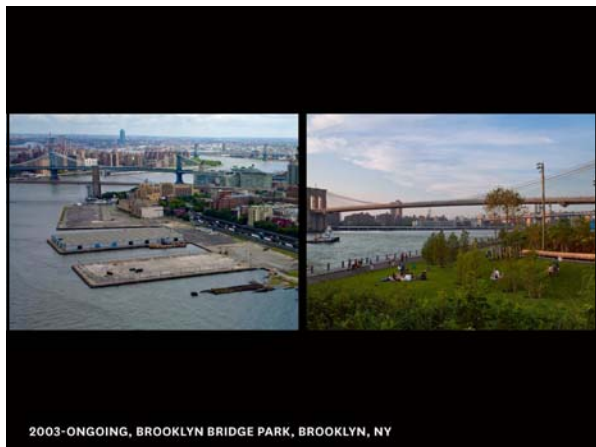








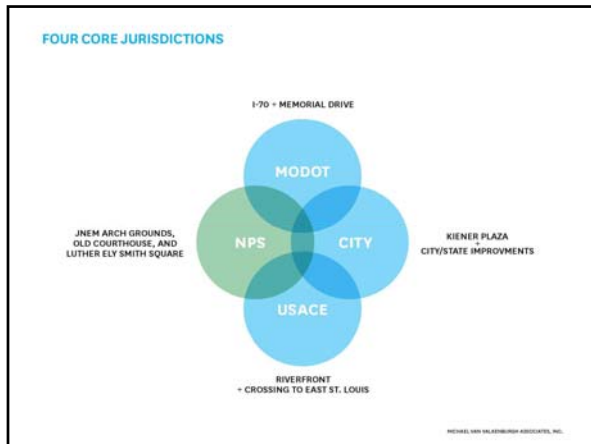


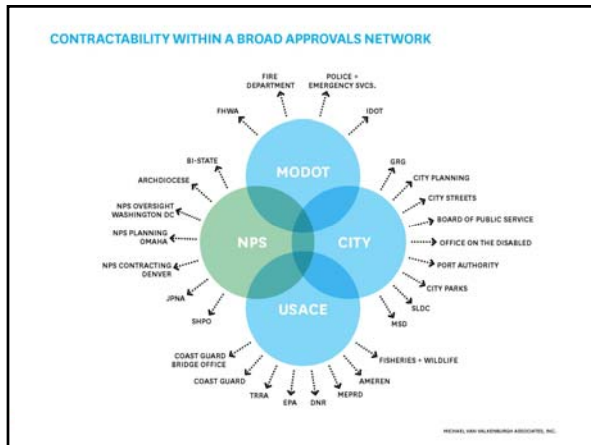










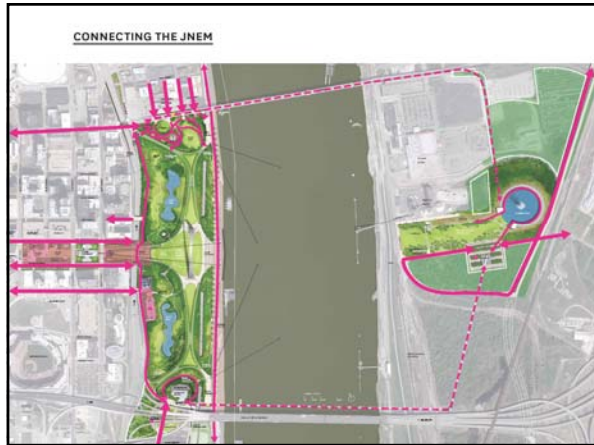


Technical Advisory Group

<p>Connections</p> <ul style="list-style-type: none"> East West Gateway Council of Governments Federal Highway Administration Illinois Department of Transportation Missouri Department of Transportation City of St. Louis Streets Department Bi-State Development Agency (Metro, Transit, Garage) Great Rivers Greenway Metro East Parks and Recreation District <p>Historic Landmark and Historic Preservation</p> <ul style="list-style-type: none"> National Park Service -- AECOM Missouri State Historic Preservation Office National Trust for Historic Preservation Illinois State Historic Preservation Office <p>National Park</p> <ul style="list-style-type: none"> National Park Service, Jefferson National Expansion Memorial (Superintendent, Deputy Superintendent, Historian, Museum Curator, Security, Midwest Regional Office and NPS Headquarters) 	<p>River and Ecology</p> <ul style="list-style-type: none"> United States Coast Guard US Army Corps of Engineers Port of St. Louis Harbor Master (representing river industry) <p>City of St. Louis</p> <ul style="list-style-type: none"> Planning and Urban Design Office of the Disabled Office of the Mayor
--	---

FRAMING A MODERN MASTERPIECE
THE CITY/THE ARCH/THE RIVER 2015

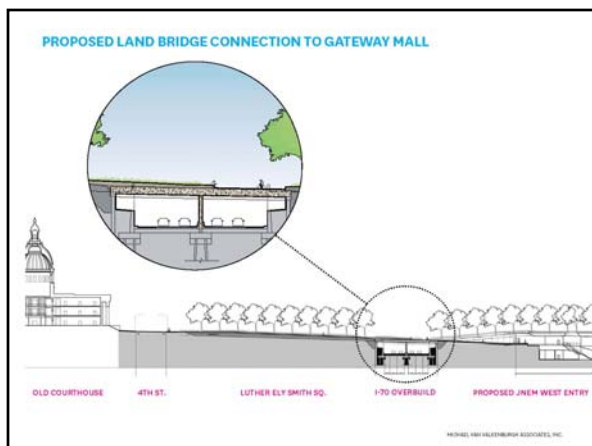










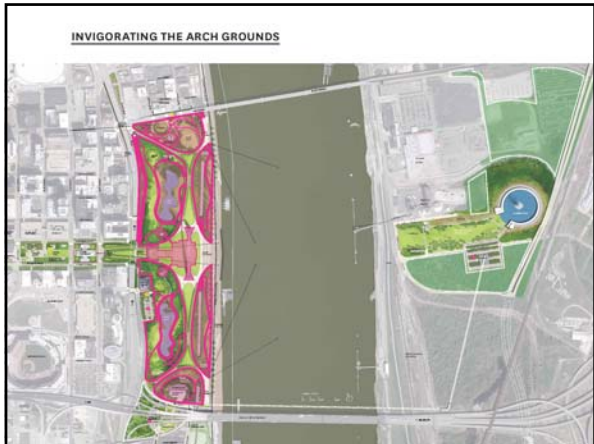






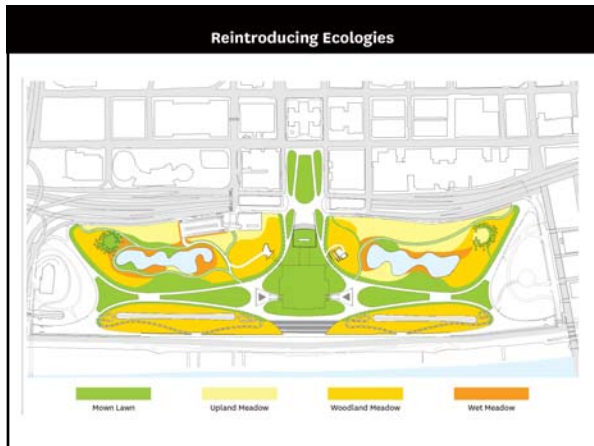


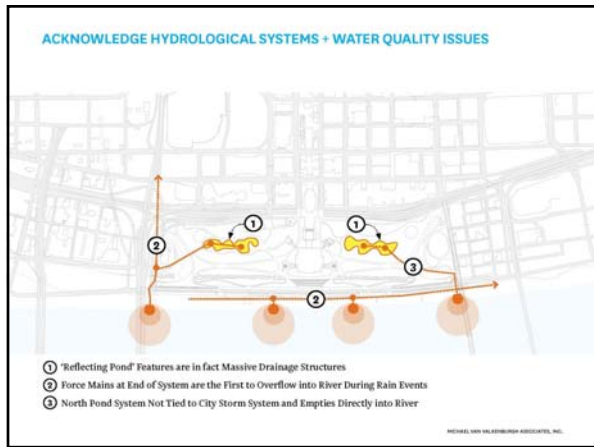
VIEW WEST FROM NEW JNEM ENTRANCE TOWARD OLD COURTHOUSE

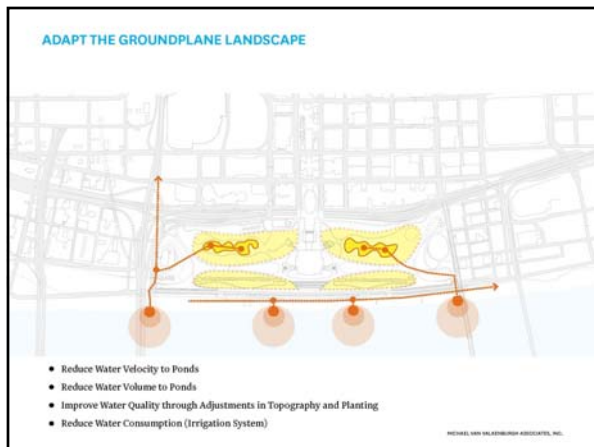


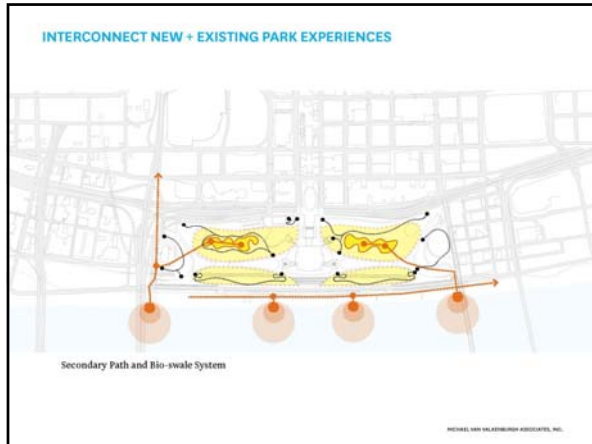
















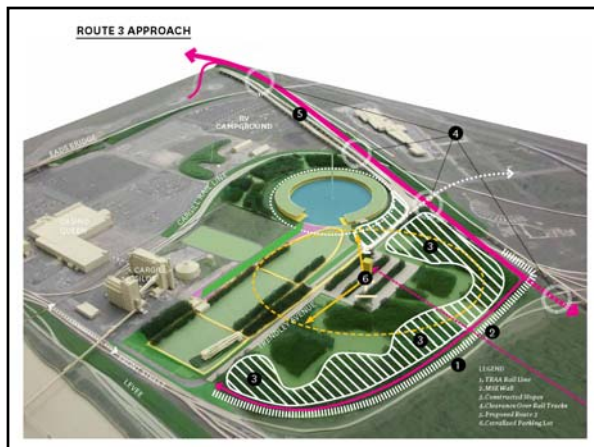













For the St. Louis Region
 #1 development opportunity
 Bi-state, 5 county, bi-partisan support

For the Nation
 Secretary of Interior Ken Salazar (7/10/2009 and 8/20/2010 visits to Arch)

“A Project of National Significance” –Secretary Salazar

Secretary of Interior Ken Salazar and Secretary of Transportation Ray LaHood (12/10/2010 visit to the Arch and East Bank)

“A legacy for future generations” –Secretary LaHood



40

Civic Impacts

Spatial and Aesthetic Impacts

Social Impacts **Quality of Life**

Environmental Impacts

Governmental Impacts

Economic Impacts



41

NEXT STEPS

- **Funding**
- **Public Engagement for Programming**
 - displays under Arch
 - traveling exhibits
 - website and blogs
 - briefing sessions, social media, comment and suggestion sessions



42

